

# OWNER'S MANUAL

## CAMBRO® GoBox® EPP400 Smart Heater®

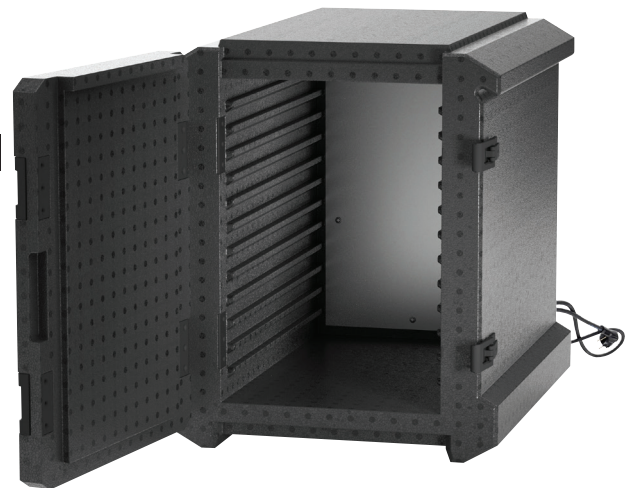
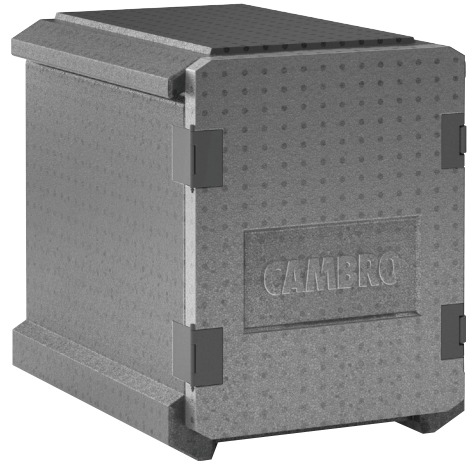
This manual applies to Cambro GoBox® EPP400 Smart Heater models:  
EPP400SH

### CAUTION:

Please read all instructions before using this Product. Original instructions verified by Cambro® Mfg. Co. are available in other languages.

### Table of Contents

I. Introduction .....	1
II. Safety Instructions and Warnings .....	2
III. Operating Instructions & Capacity Guide .....	3
IV. Cleaning and Maintenance .....	3



### I. Introduction

Congratulations on the purchase of your new Cambro GoBox EPP400 Smart Heater. If you have any further questions, please contact your Cambro Sales Representative, visit [www.cambro.com](http://www.cambro.com) or call:

#### CAMBRO EUROPE

TEL: (49) 7022 90 100 0

FAX: (49) 7022 90 100 19

[cambroeuropa@cambro.com](mailto:cambroeuropa@cambro.com)



Scan  
QR code  
for other  
languages

Model # \_\_\_\_\_

Serial # \_\_\_\_\_

Date Installed \_\_\_\_\_

# CAMBRO®

[www.cambro.com](http://www.cambro.com)

## II. Safety Instructions and Warnings

**IMPORTANT:** Read all instructions prior to use and save for future reference.

- Ensure that the power supply voltage of the GoBox EPP400 Smart Heater matches that of your electrical network.
- Do not leave the unit unattended when connected to electricity; please unplug it after each use.
- Do not put the unit on or near heat sources.
- Before use, place the unit on a horizontal, stable and well-lit surface.
- Don't leave the GoBox EPP400 Smart Heater exposed to weather conditions.
- Make sure that the electric cable does not come into contact with hot surfaces.
- Never immerse the power cord in water or other liquids; use a damp cloth to clean them.
- Unplug the unit before cleaning.
- GoBox EPP400 Smart Heater must not be powered by external timers or by separate remote controlled systems.
- To avoid burns, do not touch the plate with hands during operation.
- Do not cover the inner parts of the GoBox EPP400 Smart Heater with aluminum foil to avoid serious damage to its functioning.
- Do not wrap food with films or bags; this could constitute a fire hazard.
- Hands should always be kept dry before touching the power plug and connections.
- To unplug the unit, grasp it directly and unplug it from the wall socket. Never unplug it by pulling the cord.
- Do not use the unit if the electric cable or the plug are damaged, or if the unit itself is defective; if the power cord is damaged, it must be replaced.
- If electric extension cords are used, the latter must be adapted to the power of the GoBox EPP400 Smart Heater unit, to avoid dangers to the operator and to the safety of the environment in which it operates. Incorrect extensions may cause malfunctions.
- The GoBox EPP400 Smart Heater unit is designed for PROFESSIONAL or INDUSTRIAL USE.
- Any modifications to this product, not expressly authorized by the manufacturer, may result in the decay of the unit's safety and guarantee of its use by the user



**Caution:** Metal heater housings are hot when cart is in use and can remain hot after use.





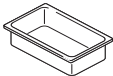
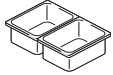

Electrical Specifications (Per Compartment)	Hot Module
REQUIRED VOLTAGE	220 - 240V AC
AMPS	.75 Amps At Pre-Heating .25 Amps When Heated
WATTS	165W at power up, +70W at preheating finish, <70W when fully operational/heated
HERTZ	50
PHASE	Single
PLUG BODY TYPES AVAILABLE FOR THESE COUNTRIES	4- Europe; 5- United Kingdom
POWER CORD LENGTH	2000mm

\*If country or plug body type is not listed, please call Cambro Customer Service for details.

### III. Operating Instructions & Capacity Guide

- The isothermal expanded polypropylene unit, GoBox EPP Smart Heater, is equipped with a highly innovative heating technology that uses a system of self-regulating thermal generators in combination with heat accumulators and a heat sink plate. The supply voltage is 220 V. The operating mode of the heating system ensures the consumption of the minimum amount of energy in order to stabilize the required temperature, also accumulating the heat of the contained product and then releasing it. Just plug it in and the Smart Heater stabilizes at 149°F (65°C) by self-adjusting the heat emission.
- Before use, clean the unit.
- It is recommended to pre-heat the unit for at least 90 minutes. When packing, it is important to quickly close the door to balance the temperature of the air inside the unit with that of the food. During waiting times, it is essential to keep the temperature stable, avoiding sudden variations.
- During loading, to avoid burns, wear oven gloves. Place the containers with food to be kept at temperature inside the GoBox EPP400 Smart Heater. Close the door quickly.
- When service is complete, unplug the unit and open the door carefully to avoid burns due to steam. When removing gastronorm food pans, to avoid burns, wear oven gloves.

#### EPP400 Holding Capacity

FOOD PAN DEPTHS		FOOD PAN DEPTHS			
					
GN FOOD PANS		2 1/2" (6,5 cm)	4" (10 cm)	6" (15 cm)	8" (20 cm)
GN 1/1		6	4	3	2
GN 1/2		12	8	6	4
GN 1/3		18	12	9	6

### IV. Cleaning and Maintenance

- Before cleaning the unit, make sure that the power cord is unplugged from both the electric socket and the connector on the GoBox EPP400 Smart Heater.
- Unscrew the 4 fixing screws to remove the Smart Heater plate. CAUTION: Wait until the plate has cooled down before cleaning. Clean the plate using only a cloth with hot water and mild detergent. Do not use strong or abrasive products or solvents. Do not use scouring pads, steel wool, or soapy pads.
- Proceed to clean the EPP unit, which can be washed in a dishwasher, with water jets, high-pressure or steam machines (max 212°F, 100°C), or by hand, but not by immersion. It must be cleaned both inside and outside and completely dried after cleaning.



### VIII. Replacement Parts

- Please visit [www.cambro.com](http://www.cambro.com) for a complete list of replacement parts or contact your local Cambro Representative or Distributor.

### IX. Cambro Warranty and Product Liability

- For comprehensive information on warranty by country and additional product information, please visit [www.cambro.com](http://www.cambro.com).

**CAMBRO**

CAMBRO U.S.A.  
TEL: 1(714) 848-1555  
FAX: 1(714) 230-4375  
international@cambro.com

CAMBRO EUROPE  
TEL: (49) 7022 90 100 0  
FAX: (49) 7022 90 100 19  
cambroeuropa@cambro.com

CAMBRO UK  
FAX: 0845 280 3411

© Copyright Cambro Manufacturing Company.

LITXUMEPFFSH